

Keep this
manual onboard!



User Manual

For Stabiliser Systems
TP-43A, SPS-e



DOCUMENT ID: 7644

REVISION: I

DATE: 2024

LANGUAGE: EN

**U
M**

Contents

User Manual

General Operation Consideration and Precaution Guidelines	3
Operation.....	4 - 7
Updating S-Link devices from the TP-43A stabilizer panel.....	8 - 9
Service and Support.....	10
Product Spare Parts and Additional Resources.....	10
Warranty Statement.....	10

General Operation Consideration and Precaution Guidelines

For the operation of stabilisers

Never use the stabilizer when close to objects/ persons or pets in the water.

Prior to operation and use it is important the operator reads this manual thoroughly to ensure necessary knowledge of the product and safety measures.

Ensure there is no risk of the fins hitting any objects, the dock, dock mooring lines or any other submerged objects close to the boat when they start moving.

General description

The Sleipner SPS E series Stabilizer System consists of two (or four) under water movable fins located on shaft and actuator assemblies penetrating through each side of the yachts hull and electrically driven by either DC or AC power, depending on the actuator size. The system is electronically gyro controlled utilizing the Sleipner S-link (CanBus) network system & stabilizes the yachts rolling motion in the water at various speeds and sea conditions or at anchor.

Before activating the stabilizer system:

Be aware of the warnings mentioned in the red box above.

Always keep the stabilizer system active when running the boat in planning or “fast” semi-planning mode - also when on calm water.

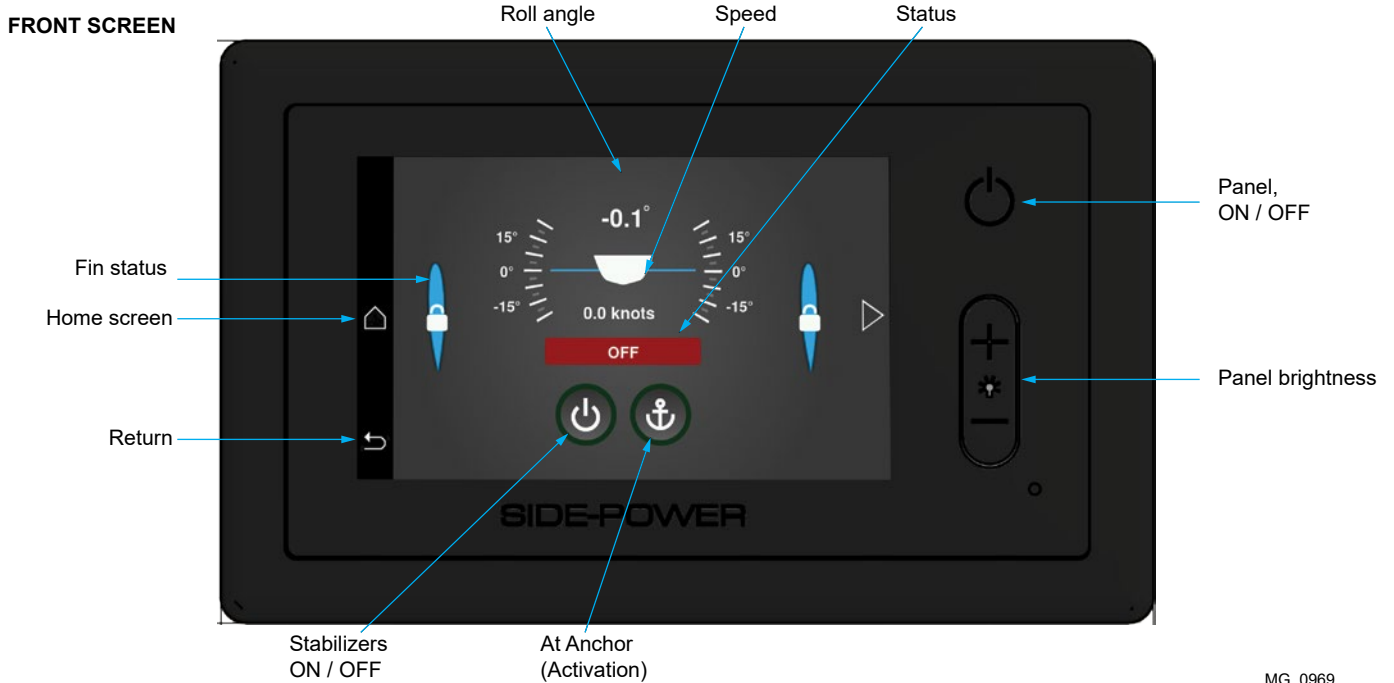
- The reason for this is to perform their stabilizing function to the required level, the fins are a large part of the boats directional and heel stability, especially at high speeds when the boats wet surfaces and direct hull forces are reduced. If you leave the fin stabilizer system off so the fins are left in a fixed position, this can make the boat behave differently than expected at high speeds.
- With the stabilizer system active, it will ensure that the boats behaviour is predictable and as comfortable as possible at all times, improving comfort also on calm water.
- If, due to a malfunction or other reason you are unable to run with the stabilizers active, we strongly recommend that you do not exceed the speed where misaligned fins will start to heel the boat.

Reverse the boat in minimal speed if the fins are not in LOCKED position.

- The fins should automatically centre and lock if you put the boat in reverse, but if this should not happen for some reason (brake failure, reverse sensor malfunction etc.) it is important that you only reverse the boat as slow as possible.

Front screen.

Symbols and buttons for the front screen is shown in the illustration below:



MG_0969

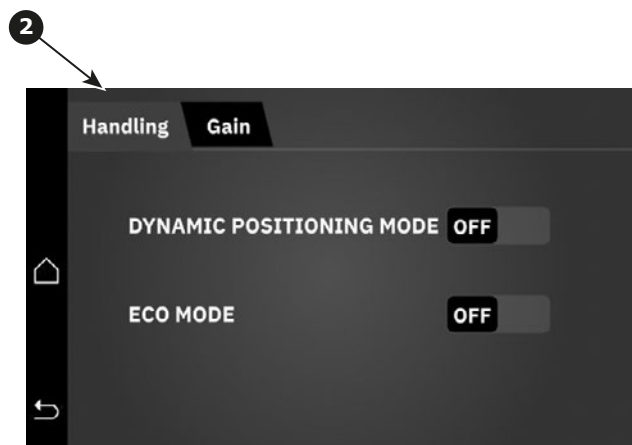
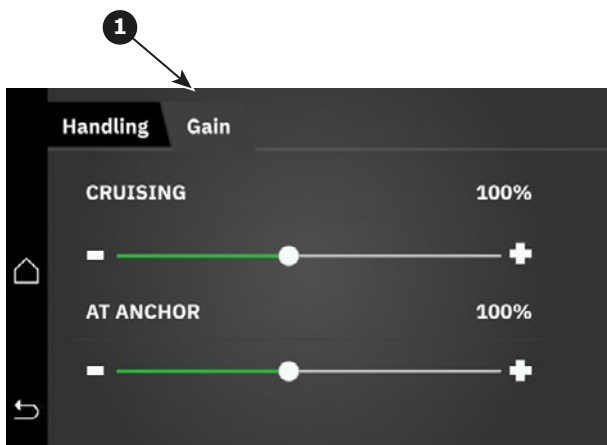


If a fin is disabled, it will be visible on the front screen. A disabled fin can be caused via an FCU fault or by deliberately turning the fin off.

The rudder signal is optional and a missing input will not stop the system from operating.

A fin can be disabled to reduce forward forces, when at anchor if there is not enough space to have it safely on, docked next to a quay or another boat, people are swimming near the fin or if there is a hydraulic leak on that actuator.

1. Gain screen (**Reference 1**)
 - (a) Possible to adjust the system's reaction to roll when cruising.
 - (b) Possible to adjust the system's reaction to roll when at anchor.
2. Handling screen. (**Reference 2**).
Possible to set Dynamic position and ECO modes



ACTIVATE Stabilizers

- From HOME menu: Touch STABILIZER (**Reference 1**).
- Fins are locked and system in OFF status. (**Reference 2**)

Activate Stabilizers to CRUISING mode:

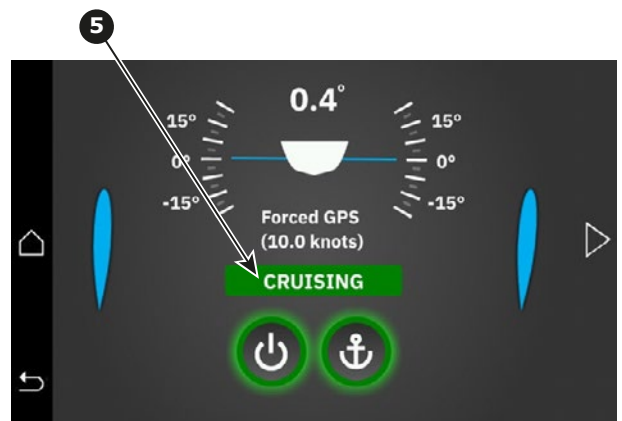
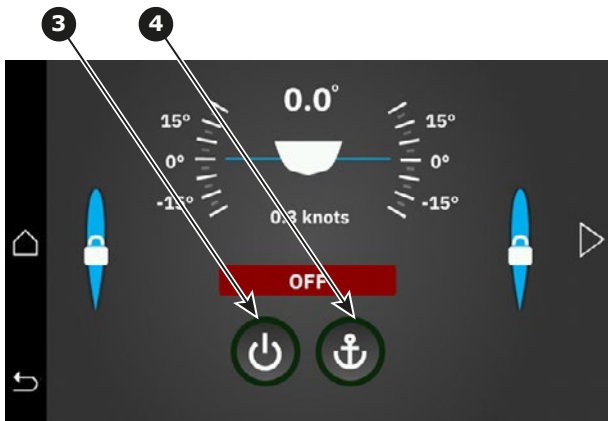
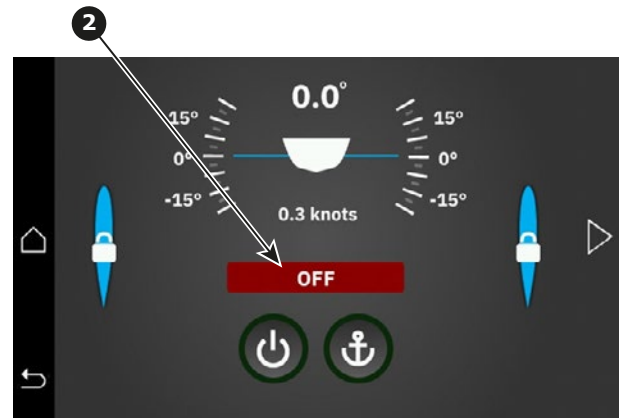
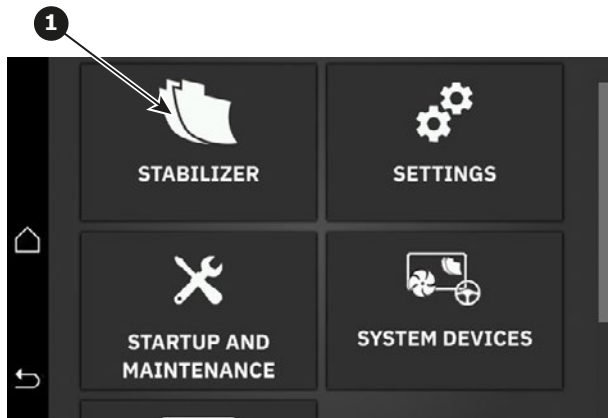
- Touch ON/OFF button (**Reference 3**). The system is starting, and a green ring become visible around the ON/OFF button, and the fin lock symbols will disappear.
Stabilizers are active in CRUISING mode Usually in use from 3/4 knots and up.
(NB: System change automatically between Cruising/At Anchor when both are activated.)
The system will be OFF when the speed is below 3 knots and "At Anchor" is disabled.

Activate Stabilizers to AT ANCHOR mode:

- Touch ANCHOR button (**Reference 4**). The system is starting and running. A green ring become visible around the ANCHOR button when anchor mode is ON.
The anchor mode is usually in use from 0 to 3/4 knots. To turn At Anchor OFF, touch Anchor again.
(NB: System change automatically between Cruising/At Anchor when both is activated.)
The display now shows the activated modes, and the actual status. (**Reference 5**).

Turn system OFF:

- Touch ON/OFF button (**Reference 3**). The fins are centred, locked and not active. (**Reference 6**).
(NB: The system can also be turned ON/OFF through the PJC-2xx panel. See the PJC-2xx manual for more information.)



Anchor mode

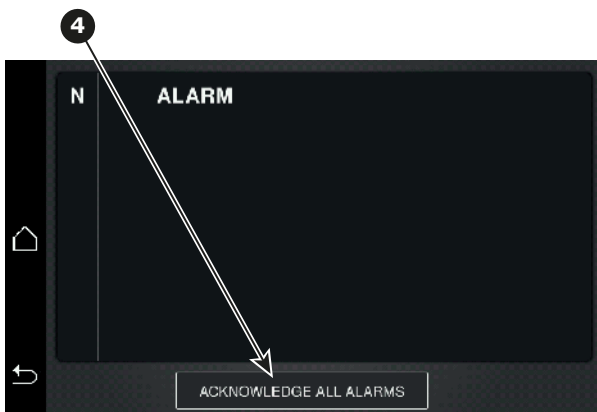
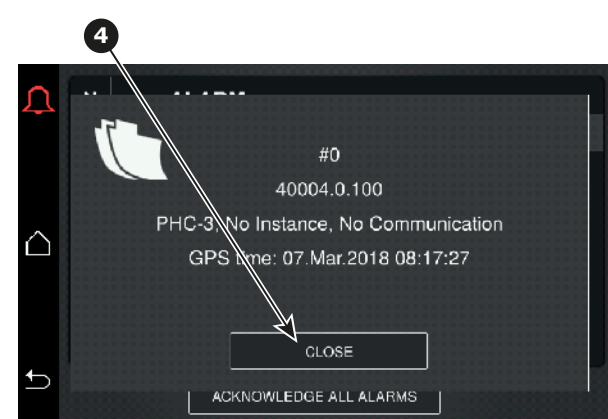
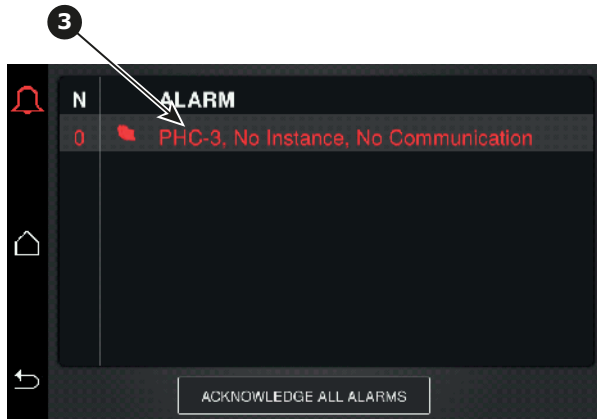
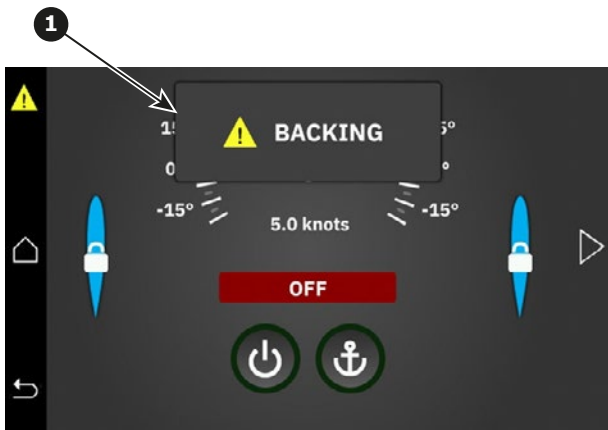
BACKING the yacht.

- When the yacht/gearbox is put in reverse the fins will automatically be centred and locked. BACKING will be indicated on the screen. (Reference 1). After reversing, the system will either resume operation or turn off, according to the setting of “suspend exit state”

ALARMS - Alarms are indicated in upper left corner of the screen.

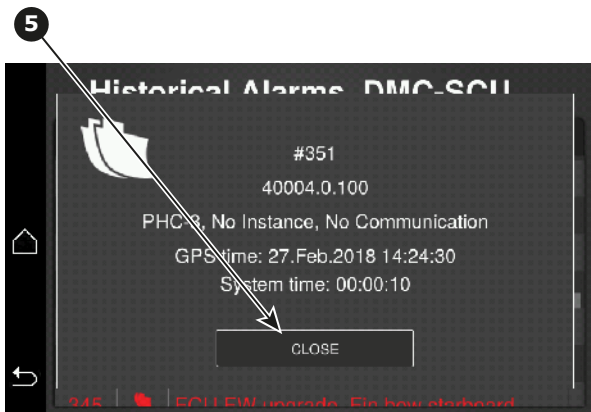
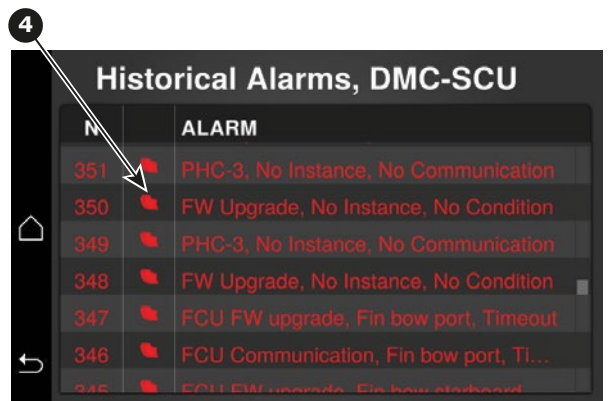
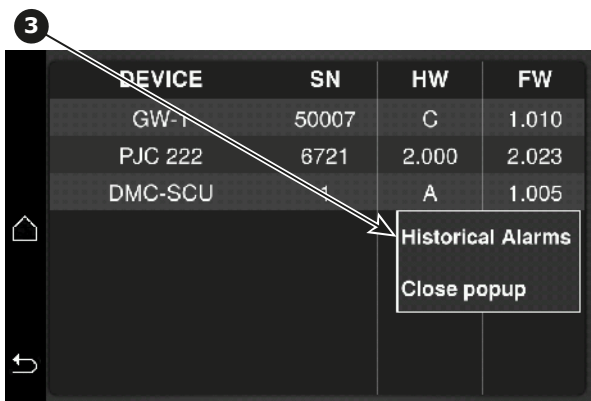
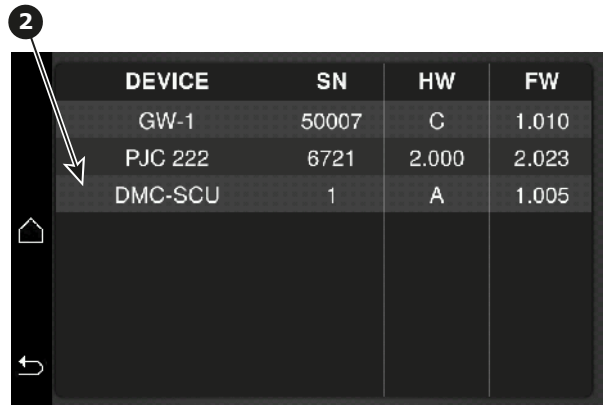
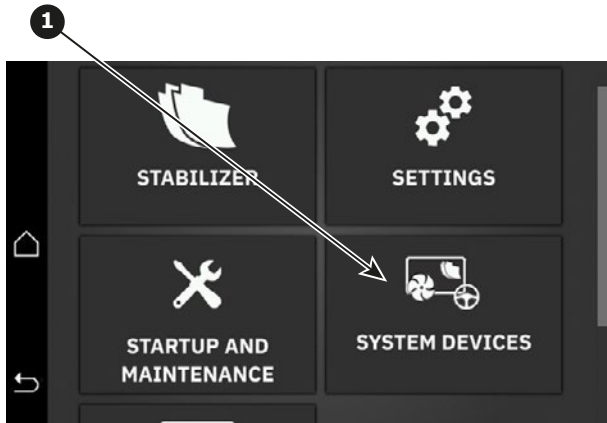
- Touch the red alarm bell to view alarm list. (Reference 2)
- Touch the active alarm for more details and Correct the cause of the alarm. (Reference 3). Alarm codes and troubleshooting actions are shown in user manual. Alarm actions will also be presented in this screen. (NB: For new parts required to correct the alarm issue, contact Sleipner representative.)
- Scan the QR code to open the fault code lookup.
- Touch close to finish alarm acknowledgement. (Reference 4).
- All alarms are acknowledged. (Reference 5).

For fault codes, troubleshooting and advanced panel information please contact your Sleipner representative.



VIEW HISTORICAL ALARMS

- Go to home page - Scroll to System devices - Touch System devices. **(Reference 1)**.
- Touch desired device(s). **(Reference 2)**.
- Historical Alarms pop(s) up - Touch Historical alarms. **(Reference 3)**.
- Historical Alarms is shown - Touch Alarm(s) to view more information. **(Reference 4)**.
- Alarm details are shown - Touch close to return to list. **(Reference 5)**.
(NB: Check code in the fault code lookup (QR code) to find what to check.)



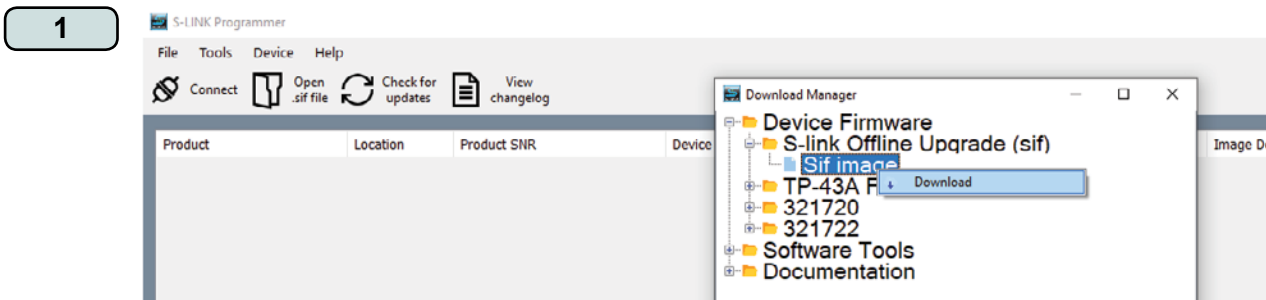
If the panel software V1.105 or newer is installed, it is possible to download the latest S-Link device software from USB or internet to the units installed on-board.

Link to S-link programmer: <https://side-power.com/slinkupgrade/S-LinkProgrammerSetup.zip>

USB installation

1. Start S-Link programmer. Open the download manager found in the tools menu/download manager menu. Proceed to select S-Link off-line upgrade and download the file to a FAT32-formatted USB memory stick of good quality:
2. Insert the USB stick to the USB port at the back of the stabilizer panel (or the USB extension port if installed for easier access). Go to the SYSTEM DEVICES page: Products with an available software upgrade will show a blue download button in the status column. Select a device to see the details:
3. Select UPGRADE DEVICE and acknowledge:

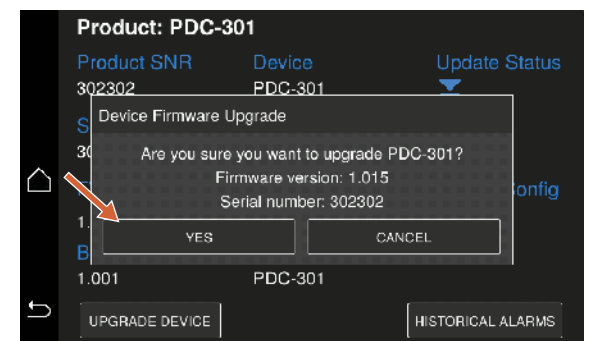
After upgrade, go back and proceed to upgrade other devices.



2

PRODUCT	SNR	HW	FW	STATUS
PJC 222	5810	2.000	2.030	✓
PJC 222	1	2.000	2.030	✓
DMC-SCU	1001	A	1.029	⏴
MSI 8730B	1610	1.100	1.211	✓
PDC-301	302302	A	1.011	⏴

Available for update



Internet download

Activate the wireless network or use Ethernet connection from the panel menu:

When connection is established, go to the SYSTEM DEVICES page and proceed to upgrade the devices.

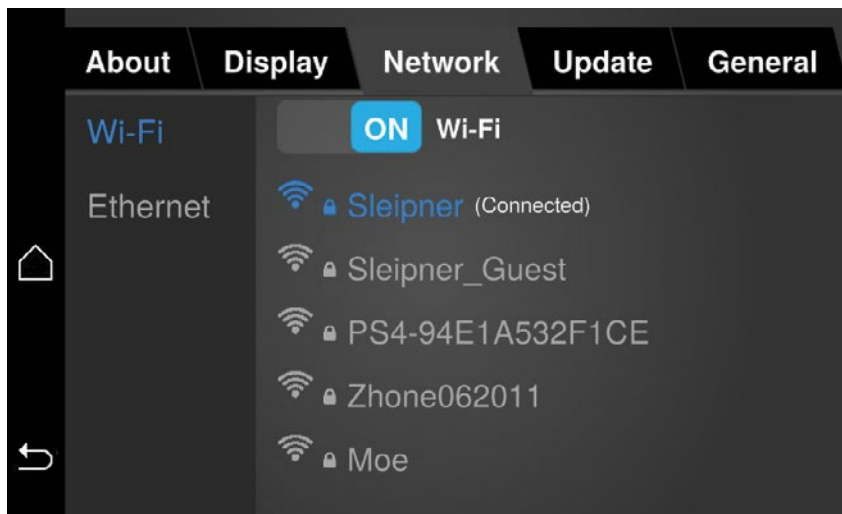
Allow some time for hand-shake between panel and server. Go to the UPDATE tab, Online update to check for a panel software update. The panel will download available device firmware updates when entering the System device menu with working internet connection.

If you need to reset the wi-fi settings, go to general tab and select reset then reset network settings.

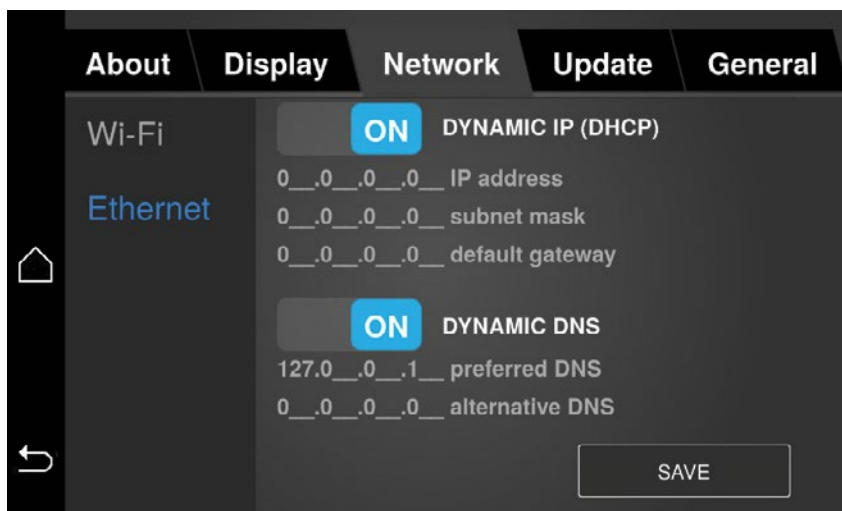
IMPORTANT

Turn wi-fi off after downloading, before resuming system operation.

WIFI



Ethernet



MG_0392

Find your local professional dealer from our certified worldwide network for expert service and support. visit our website www.sleipnergrou.com/support

Product spare parts and additional resources

For additional supporting documentation, we advise you to visit our website www.sleipnergrou.com and find your Sleipner product.

Warranty statement

1. Sleipner Motor AS (The “Warrantor”) warrants that the equipment (parts, materials, and embedded software of products) manufactured by the Warrantor is free from defects in workmanship and materials for purpose for which the equipment is intended and under normal use and maintenance service (the “Warranty”).
2. This Warranty is in effect for two years (Leisure Use) or one year (Commercial and other Non-leisure Use) from the date of delivery/purchase by the end user, with the following exceptions;
 - (a) For demonstration vessels, or vessels kept on the water, the dealer is considered as the end user from 6 months after their launch of the vessel;
 - (b) The warranty period starts no later than 18 months after the first launch of the vessel.
 Please note that the boat manufacturer and dealer must pay particular attention to correct maintenance and service both by the products manuals as well as general good practice for the location the boat is kept in the period the boat is in their care. In cases where the 6 and 18 months grace periods for boat builders and dealers are passed, it is possible to obtain a full warranty upon inspection and approval of the warrantor or such representative.
3. Certain parts, classified as wearable or service parts, are not covered by the warranty. A failure to follow the required maintenance and service work as described in the product manual render all warranty on parts or components directly or indirectly affected by this void. Please also note that for some parts, time is also a factor separately from actual operational hours.
4. This Warranty is transferable and covers the equipment for the specified warranty period.
5. The warranty does not apply to defects or damages caused by faulty installation or hook-up, abuse or misuse of the equipment including exposure to excessive heat, salt or fresh water spray, or water immersion except for equipment specifically designed as waterproof.
6. In case the equipment seems to be defective, the warranty holder (the “Claimant”) must do the following to make a claim:
 - (a) Contact the dealer or service centre where the equipment was purchased and make the claim. Alternatively, the Claimant can make the claim to a dealer or service centre found at www.sleipnergrou.com. The Claimant must present a detailed written statement of the nature and circumstances of the defect, to the best of the Claimant’s knowledge, including product identification and serial nbr., the date and place of purchase and the name and address of the installer. Proof of purchase date should be included with the claim, to verify that the warranty period has not expired;
 - (b) Make the equipment available for troubleshooting and repair, with direct and workable access, including dismantling of furnishings or similar, if any, either at the premises of the Warrantor or an authorised service representative approved by the Warrantor. Equipment can only be returned to the Warrantor or an authorised service representative for repair following a pre-approval by the Warrantor’s Help Desk and if so, with the Return Authorisation Number visible postage/shipping prepaid and at the expense of the Claimant.
7. Examination and handling of the warranty claim:
 - (a) If upon the Warrantor’s or authorised service Representative’s examination, the defect is determined to result from defective material or workmanship in the warranty period, the equipment will be repaired or replaced at the Warrantor’s option without charge, and returned to the Purchaser at the Warrantor’s expense. If, on the other hand, the claim is determined to result from circumstances such as described in section 4 above or a result of wear and tear exceeding that for which the equipment is intended (e.g. commercial use of equipment intended for leisure use), the costs for the troubleshooting and repair shall be borne by the Claimant;
 - (b) No refund of the purchase price will be granted to the Claimant, unless the Warrantor is unable to remedy the defect after having a reasonable number of opportunities to do so. In the event that attempts to remedy the defect have failed, the Claimant may claim a refund of the purchase price, provided that the Claimant submits a statement in writing from a professional boating equipment supplier that the installation instructions of the Installation and Operation Manual have been complied with and that the defect remains.
8. Warranty service shall be performed only by the Warrantor, or an authorised service representative, and any attempt to remedy the defect by anyone else shall render this warranty void.
9. No other warranty is given beyond those described above, implied or otherwise, including any implied warranty of merchantability, fitness for a particular purpose other than the purpose for which the equipment is intended, and any other obligations on the part of the Warrantor or its employees and representatives.
10. There shall be no responsibility or liability whatsoever on the part of the Warrantor or its employees and representatives based on this Warranty for injury to any person or persons, or damage to property, loss of income or profit, or any other incidental, consequential or resulting damage or cost claimed to have been incurred through the use or sale of the equipment, including any possible failure or malfunction of the equipment or damages arising from collision with other vessels or objects.
11. This warranty gives you specific legal rights, and you may also have other rights which vary from country to country.

Patents

At Sleipner we continually reinvest to develop and offer the latest technology in marine advancements. To see the many unique designs we have patented, visit our website www.sleipnergrou.com/patents

© **Sleipner Group**, All rights reserved

The information given in the document was right at the time it was published.

However, Sleipner Group cannot accept liability for any inaccuracies or omissions it may contain. Continuous product improvement may change the product specifications without notice.

Therefore, Sleipner Group cannot accept liability for any possible differences between product and document.

**Learn more about our products at
www.sleipnergroun.com**



SLEIPNER

Ocean born. Tech bred.

SLEIPNER MOTOR AS

P.O. Box 519

N-1612 Fredrikstad

Norway

www.sleipnergroun.com

Made in Norway